



Saint Pius X Catholic High School

CHARGES & REMISSION POLICY

APRIL 2011

Our Mission Statement:

"Saint Pius X Catholic High School is a Catholic School in which the Gospel message of the Kingdom of God is revealed through our work and through our relationships with our brothers and sisters in Christ"

This is encompassed in the statement: 'Love one another as I have loved you'
John 13

This policy has been formulated in accordance with the local authority guidance on charging for school activities

Aim

The aim of this policy is to set out what charges will be levied for activities, what remissions will be implemented and the circumstances under which voluntary contributions will be requested from parents.

Responsibilities

The Governing Body of the school is responsible for determining the content of the policy and the Head teacher for implementation. Any determinations with respect to individual parents will be considered jointly by the Head teacher and Governing Body.

Publication of information

A summary of this policy will be included in the school prospectus which will specify what charges are/are not to be made and for which activities voluntary contributions will be invited from parents. The policy is available to download from the school website.

Charges cannot be made for:

The Governing Body of the school recognises that the legislation prohibits charges for the following:

- education provided during school hours (including the supply of any materials, books, instruments or other equipment)
- education provided outside school hours if it is part of the National Curriculum, or part of a syllabus for a prescribed public examination that the student is being prepared for at the school, or part of religious education
- tuition for students learning to play musical instruments if the tuition is required as part of the National Curriculum, or part of a syllabus for a prescribed public examination that the student is being prepared for at the school, or part of religious education
- entry for a prescribed public examination, if the student has been prepared for it at the school
- examination re-sits if the student is being prepared for the re-sits at the school
- education provided on any trip that takes place during school hours
- education provided on any trip that takes place outside school hours if it is part of the National Curriculum, or part of a syllabus for a prescribed public examination that the student is being prepared for at the school, or part of religious education
- supply teachers to cover for those teachers who are absent from school accompanying students on a residential trip
- transporting registered students to or from the school premises, where the local education authority has statutory obligation to provide transport

- transporting registered students to other premises where the Governing Body or local authority has arranged for students to be educated
- transport that enables a student to meet an examination requirement when he has been prepared for that examination at the school
- transport provided in connection with an educational trip

Charges

The Governing Body will make a charge for:

- a) the cost of board and lodging on residential visits in school hours UNLESS parents are in receipt of relevant benefits which entitle them to exemption of these charges (see remissions)
- b) the proportionate costs for an individual child of activities wholly or mainly outside school hours which may be considered optional extras, to meet the costs for
 - travel
 - materials and equipment
 - non-teaching staff costs
 - entrance fees
 - insurance costs
- c) vocal and musical instrument tuition whether in or out of school hours. Costs will vary depending on the tuition which is provided
- d) re-sits for public examinations where no further preparation has been provided by the school. Costs will vary depending on the examinations concerned and will be provided on request
- e) costs of non-prescribed examinations where no further preparation has been provided by the school. Costs will vary depending on the examinations concerned and will be provided on request

- f) The full cost of any re-assessment requested by a parent of the result of a public examination. Costs will vary depending on the examinations concerned and will be provided on request
- g) The full cost of materials used in Design and Technology subject to parents having agreed in advance that they wish to own the finished product. The cost will depend on the nature of the finished product
- h) The full cost of examination fees where a student fails to complete examinations without good reason
- i) The full cost of breakages and replacements as a result of damages caused wilfully or negligently by students
- j) The full cost of extra-curricular activities and school clubs

Remission

Children whose parents are in receipt of the following support payments will, in addition to having a free school lunch entitlement, also be entitled to the remission of charges for board and lodging costs during residential school trips. The relevant support payments are:

- income support
- income based job seekers allowance
- support under part V1 of the Immigration and Asylum Act 1999
- child tax credit, where the parent does not receive working tax credit and the family's annual household income (as assessed by HM Revenue and Customs) does not exceed £15860 (financial year 2011/12)

No other remissions will be offered

Voluntary contributions

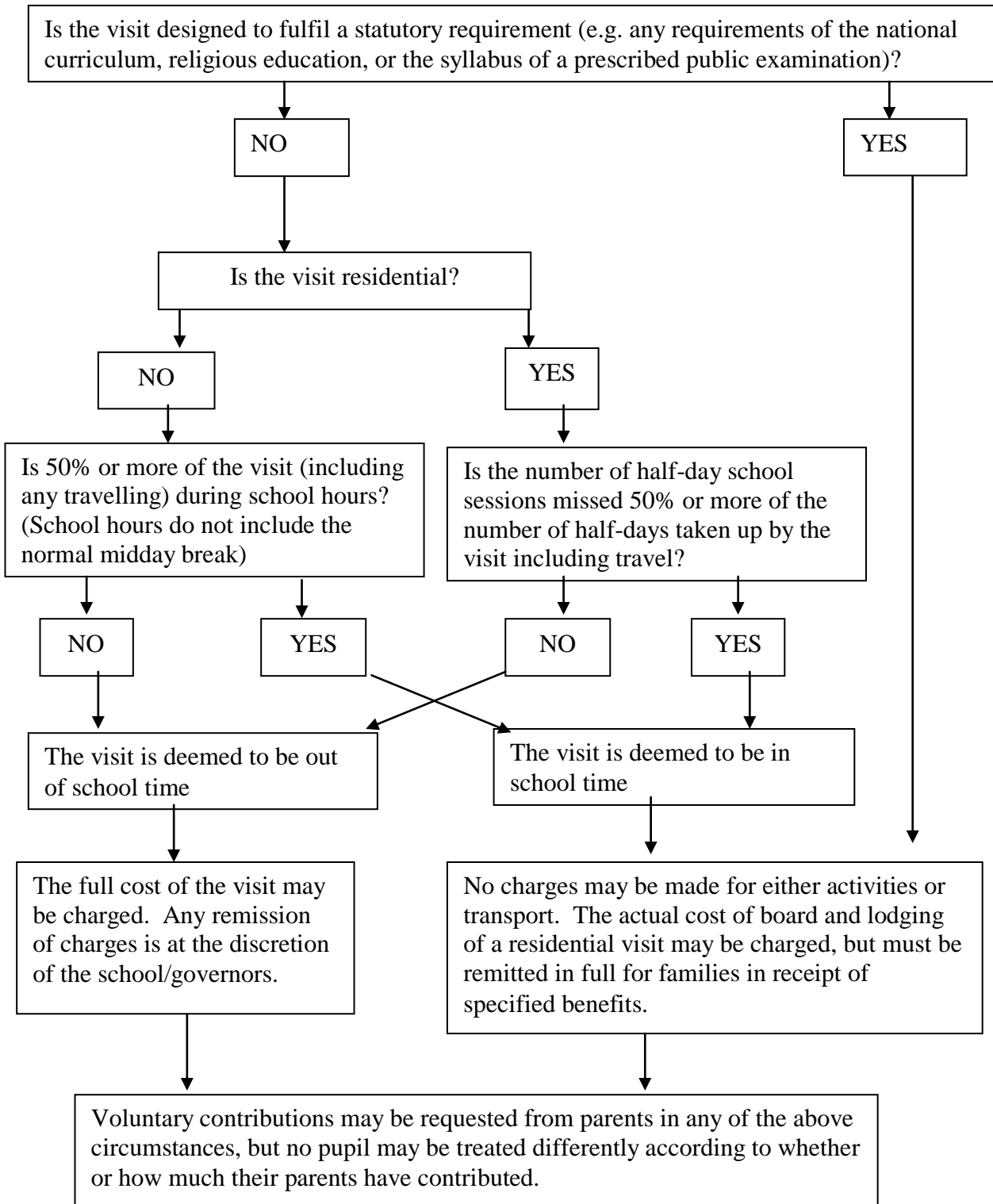
Parents will be invited to make a voluntary contribution for

- educational visits – to pay for the cost of transport, materials required and entrance fees and therefore enable the visit to take place
- specialist instructors e.g. self defence in PE

The terms of any request made to parents will specify that the request is for a voluntary contribution and in no way represents a charge. In addition the following will be made clear to parents:

- a) that the contribution is genuinely voluntary and a parent is under no obligation to pay
- b) that registered students at the school will not be treated differently according to whether or not their parents have made any contribution in response to the request
- c) the responsibility for determining the level of voluntary contribution is delegated to the Head teacher

Charges / Voluntary Contributions



Gvernors Use Only:

Put on school website? YES

Rotherham Policy adopted by Governing Body April 2011
Next review: April 2012